

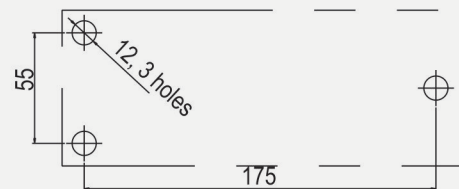
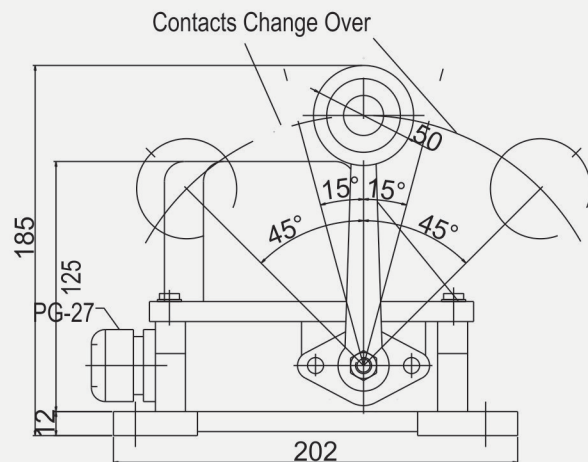
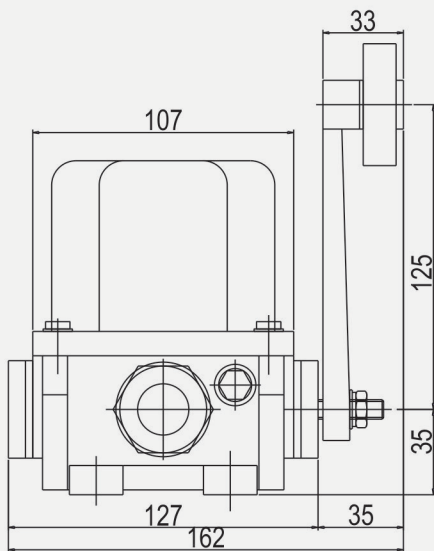
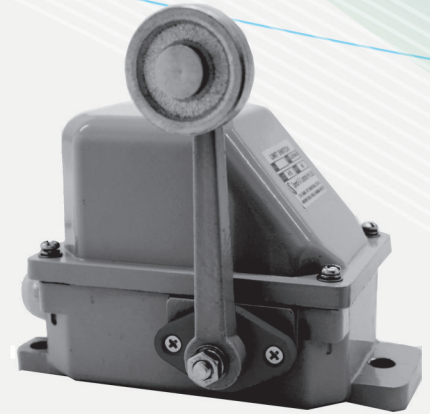
# Steel Mill Duty Limit Switch

## Introduction

Lever type Limit Switch operates the control change-over contacts of motor of any moving equipments when a cam moving with loads actuates the lever of Limit Switch. This turns the cam on a square shaft and operate the NO / NC change over contact elements.

## Technical Data

Limit Switch	Steel Mill Duty
Type	Two Way / One Way
Body Material	AL Die Cast
Protection Degree	IP-55 ( IS-13947 (Part - 1)
Operating Temperature	-25°C to 70°C Cast Aluminum Enclosing
Mounting Position	Horizontal Lever Upward and Downward
Cable Gland	PG - 27
Contacts	Double Brake, Silver Cadmium
Wire Connection	Screw Terminal Contact
Rated Voltage	Up To 500 VAC
Thermal Test Current	10 A
No. Of Contacts	2 NC ( 1 + 1NC NC )



SWITCHING DIAGRAMS

Umounting Details

Type	Number of work positions	Type of drive	Fixation(in the)	Maximum speed drive, m / min
ULS/2SH/2	2	Two lever with rollers	Outermost positions	300



**Speed-O-Controls Pvt. Ltd.**

H. O. Unit - I : C-15/16, Nand Jyot Industrial Estate,  
Andheri-Kurla Road, Mumbai - 400072 ,  
Tel : (022) 42469700-30, 28518512-3-4,  
Fax : (022) 42469797/ 28518516,  
E-mail : sales@socgroup.in

Unit - II: Plot No. 4912, G. I. D. C., Phase IV,  
Vatva, Ahmedabad - 382445  
Tel.: (079) 40083201/2/3/4,  
Fax : (079) 25841056,  
E-mail : sales.amd@socgroup.in

Visit us at :  
[www.speedocontrols.com](http://www.speedocontrols.com)  
[www.socremote.com](http://www.socremote.com)