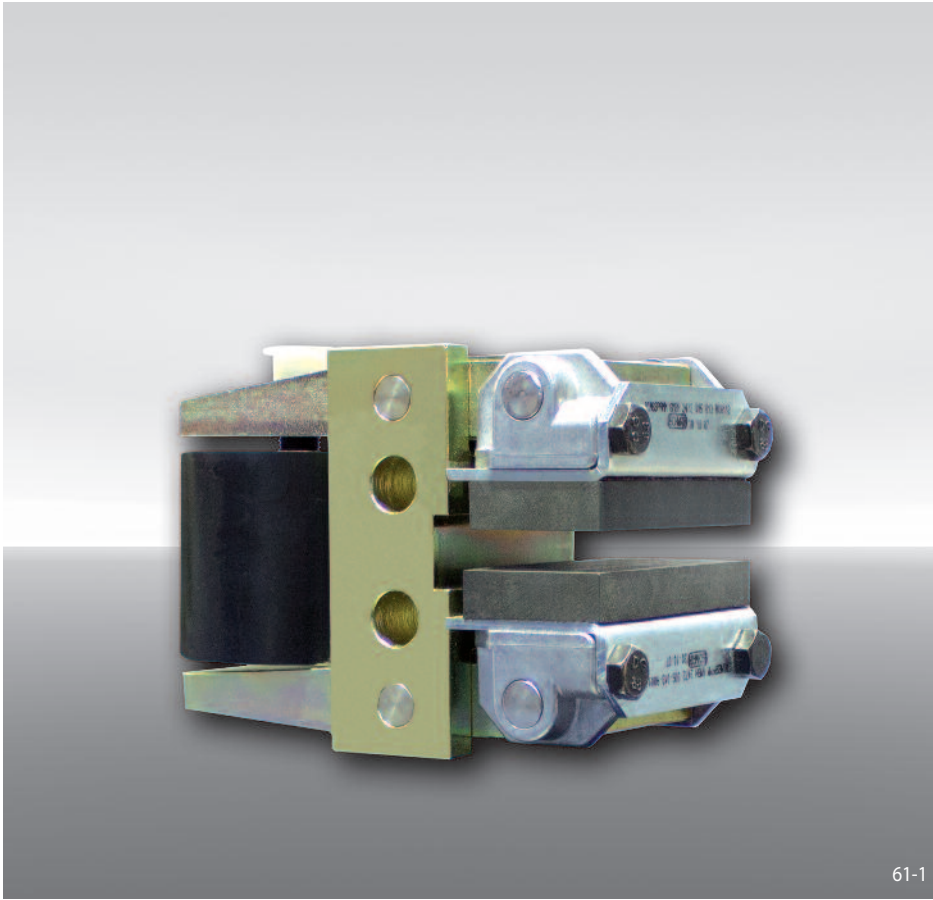


Brake Caliper DH 015 PFK

pneumatically activated – spring released



61-1

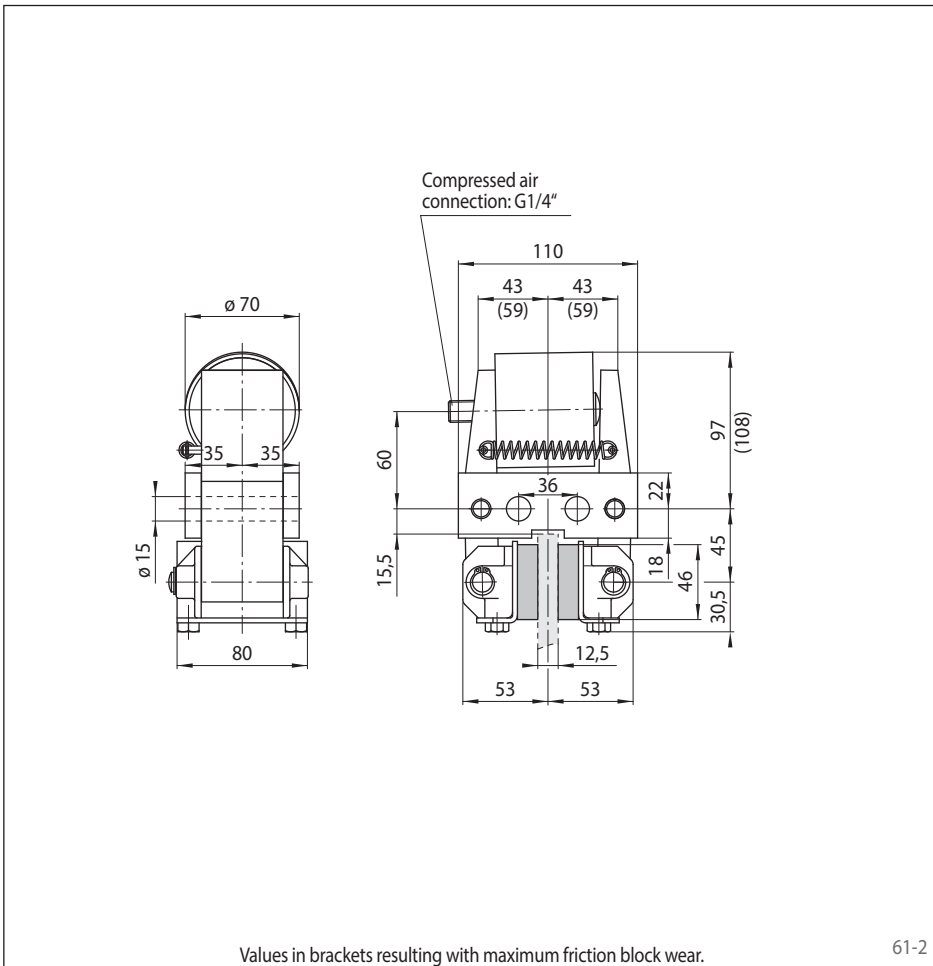
Features

Features	Code
Brake Caliper	D
Mounting to the machine at right angles to the brake disc	H
Frame size 015	015
Pneumatically activated	P
Spring released	F
No adjustment to accommodate friction block wear	K
Thruster 620	620
Thruster mounted in central position	M
Thickness of brake disc 12,5 mm	12

Example for ordering

Brake Caliper DH 015 PFK, thruster 620, thruster mounted in central position, thickness of brake disc 12,5 mm:

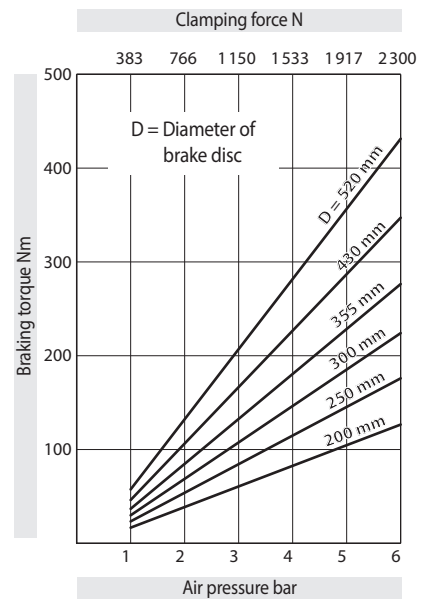
DH 015 PFK - 620 M - 12



Values in brackets resulting with maximum friction block wear.

61-2

Technical Data



The braking torques shown in the diagram are based on a theoretical friction coefficient of 0,4.

Air pressure: max. 6 bar

Air volume: max. 124 cm³ per activation

Weight: 4,6 kg