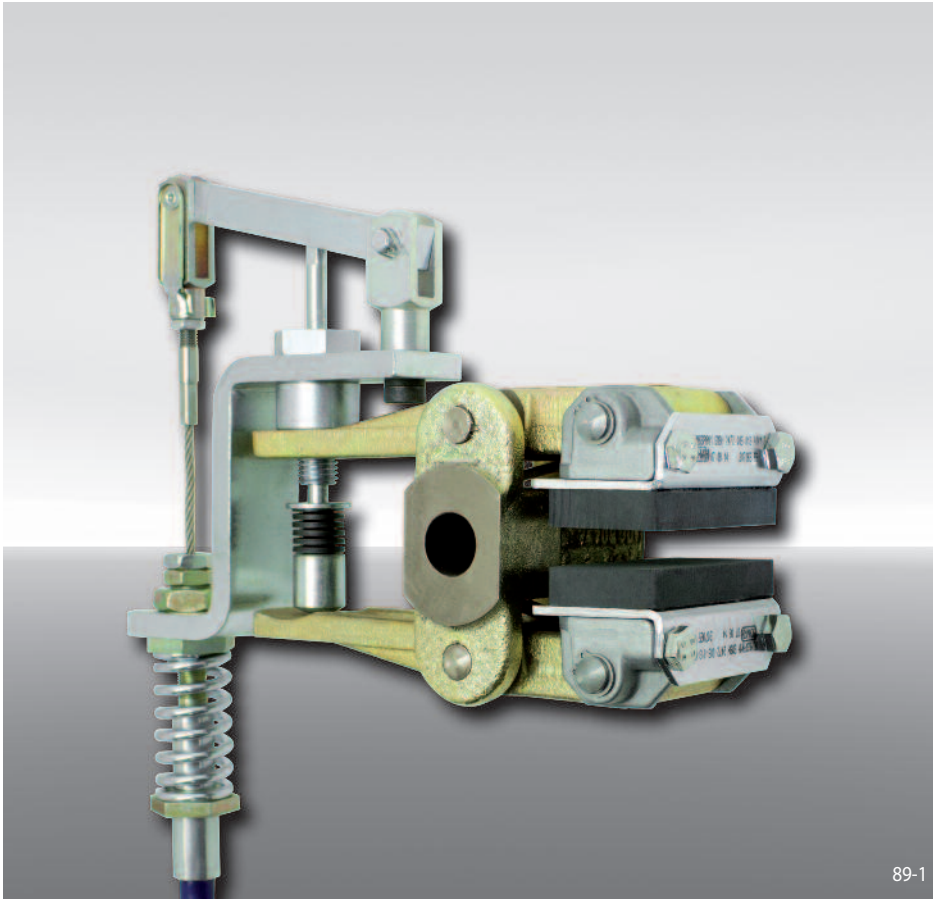


Brake Caliper DH 020 MKM

manually activated – manually released
by Pull Cable



89-1

Features

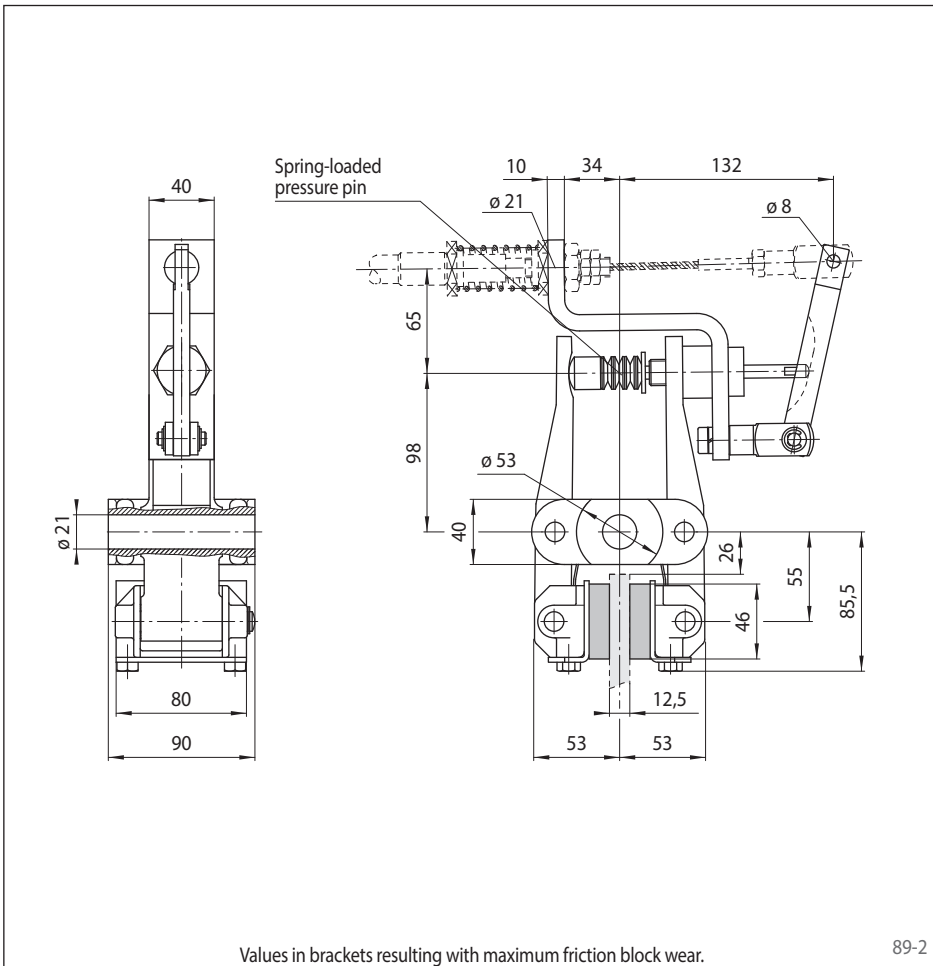
| Features | Code |
|--|------|
| Brake Caliper | D |
| Mounting to the machine at right angles to the brake disc | H |
| Frame size 020 | 020 |
| Manually activated | M |
| Manually released | K |
| Manual adjustment to accommodate friction block wear | M |
| Spring-loaded pressure pin 730 | 730 |
| Position of the pull cable installation to the right or left can be defined by turning the brake during installation | U |
| Thickness of brake disc 12,5 mm | 12 |

Example for ordering

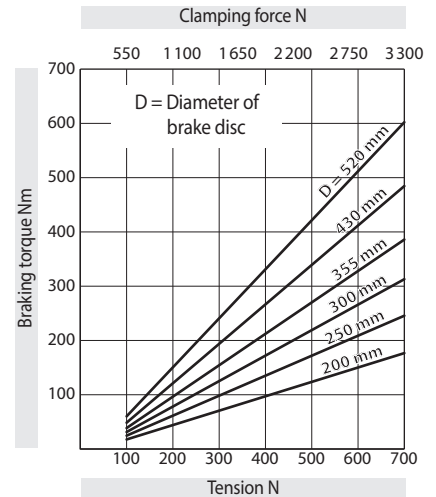
Brake Caliper DH 020 MKM, pressure pin 730, position of the pull cable installation can be to the right or left, thickness of brake disc 12,5 mm:

DH 020 MKM - 730 U - 12

Technical Data



89-2



The braking torques shown in the diagram are based on a theoretical friction coefficient of 0,4.

Weight: 5,1 kg

Accessories

The Brake Caliper can be delivered fully assembled with RCS® Pull Cable and Hand Brake Lever. Please indicate the required cable length.

For further information regarding RCS® Pull Cables and Hand Brake Lever see page 121.

A spring loaded pressure pin compensates for wear of the friction block during the braking action.