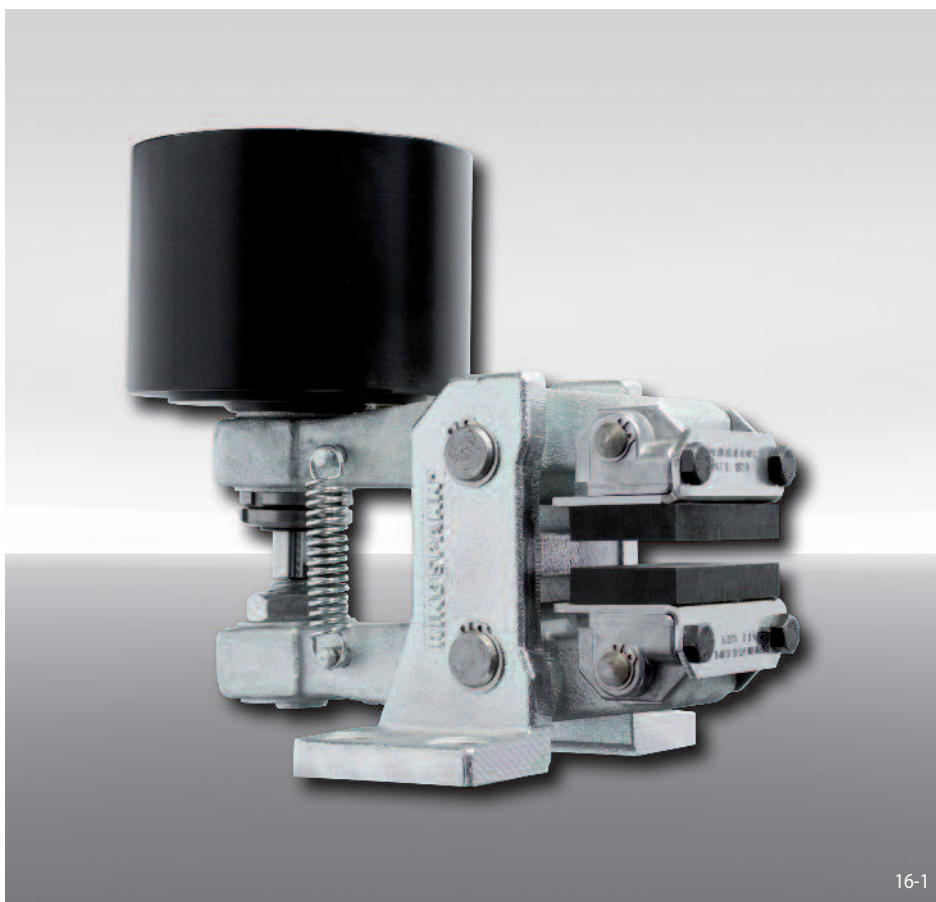


Brake Caliper DV 030 FPM

spring activated – pneumatically released



16-1

Features

Features	Code
Brake Caliper	D
Mounting to the machine parallel to the brake disc	V
Frame size 030	030
Spring activated	F
Pneumatically released	P
Manual adjustment to accommodate friction block wear	M
Thrusters 025, 035, 045 or 101 are available	025 to 101
Thruster mounted right or left available	R L
Thickness of brake disc 12,5 mm or 25 mm	12 25

Example for ordering

Brake Caliper DV 030 FPM, thruster 035, thruster mounted right, thickness of brake disc 12,5 mm:

DV 030 FPM - 035 R - 12

Technical Data

	Brake Caliper DV 030 FPM			
	with thruster 025	with thruster 035	with thruster 045	with thruster 101
Brake disc diameter	Braking torque	Braking torque	Braking torque	Braking torque
mm	Nm	Nm	Nm	Nm
200	270	400	570	760
250	370	540	770	1050
300	460	680	970	1300
355	570	840	1200	1600
430	710	1050	1500	2000
520	890	1300	1900	2500
Arrangement	right / left	right / left	right / left	right
Clamping force	4800 N	7 100 N	10 100 N	13 500 N
Air pressure	min. 5 bar max. 8 bar	min. 4,2 bar max. 8 bar	min. 5 bar max. 8 bar	min. 4,5 bar max. 8 bar
Air volume per activation	max. 120 cm ³	max. 185 cm ³	max. 185 cm ³	max. 540 cm ³
Weight	9,1 kg	11,2 kg	11,2 kg	12,4 kg

The braking torques shown in the table are based on a theoretical friction coefficient of 0,4.

Brake Caliper DV 030 FPM

spring activated – pneumatically released

