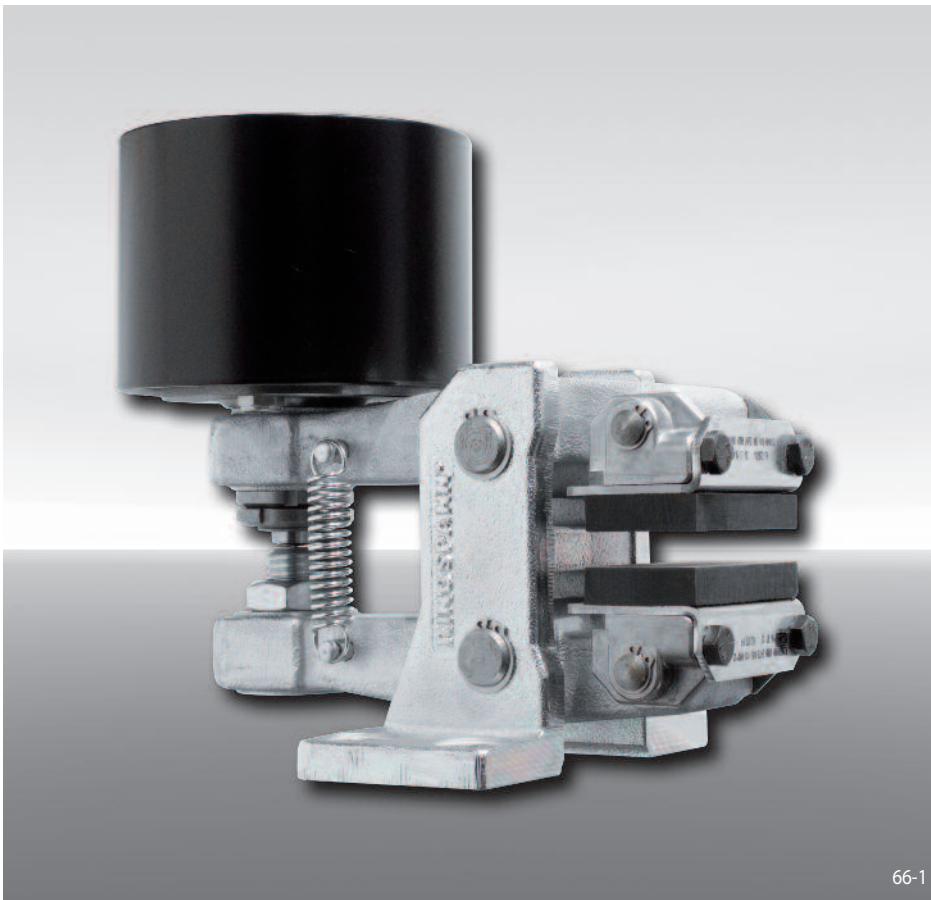


Brake Caliper DV 030 PFM

pneumatically activated – spring released



Features

| Features | Code |
|--|------------|
| Brake Caliper | D |
| Mounting to the machine parallel to the brake disc | V |
| Frame size 030 | 030 |
| Pneumatically activated | P |
| Spring released | F |
| Manual adjustment to accommodate friction block wear | M |
| Thrusters 635 or 655 are available | 635 655 |
| Thruster mounted right or left available | R L |
| Thickness of brake disc 12,5 mm or 25 mm | 12 25 |

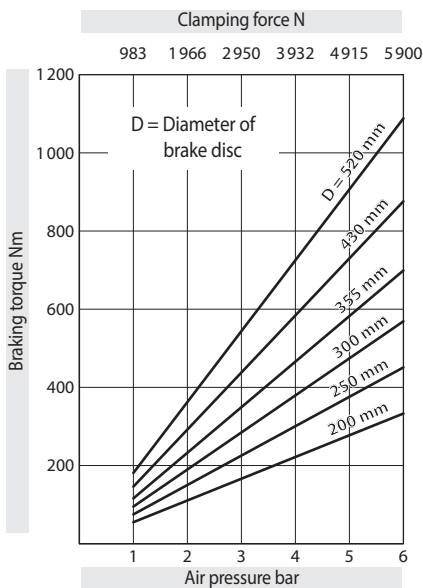
Example for ordering

Brake Caliper DV 030 PFM, thruster 635, thruster mounted right, thickness of brake disc 12,5 mm:

DV 030 PFM - 635 R - 12

Technical Data

Brake Caliper DV 030 PFM - 635



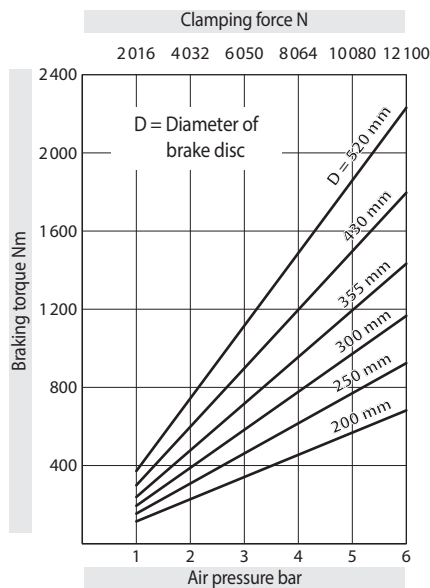
The braking torques shown in the diagram are based on a theoretical friction coefficient of 0,4.

Air pressure: max. 6 bar

Air volume: max. 175 cm³ per activation

Weight: 7,3 kg

Brake Caliper DV 030 PFM - 655



The braking torques shown in the diagram are based on a theoretical friction coefficient of 0,4.

Air pressure: max. 6 bar

Air volume: max. 740 cm³ per activation

Weight: 10,5 kg

Brake Caliper DV 030 PFM

pneumatically activated – spring released

