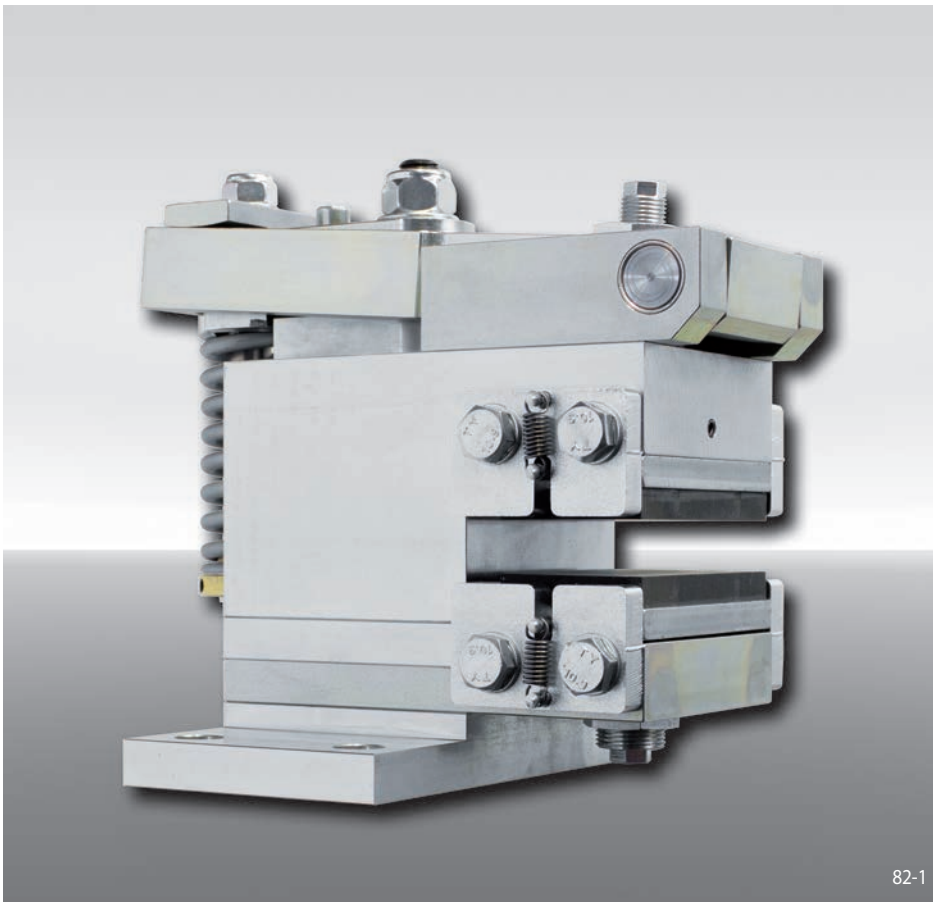


Brake Calipers EV 038 EFM and EH 038 EFM

electromagnetically activated – spring released



82-1

Features

Features	Code
Brake Caliper with electromagnet	E
Mounting to the machine parallel or at right angles to the brake disc	V H
Frame size 038	038
Electromagnetically activated	E
Spring released	F
Manual adjustment to accommodate friction block wear	M
Supply voltage 230 to 415 VAC, supply frequency 50 Hz or 60 Hz adjustable	400
Electromagnet mounted in central position	M
Thickness of brake disc 12,5 ... 20 mm or 22 ... 30 mm	12 25

Example for ordering

Brake Caliper EV 038 EFM, supply voltage 400 VAC, electromagnet mounted in central position, thickness of brake disc 25 mm:

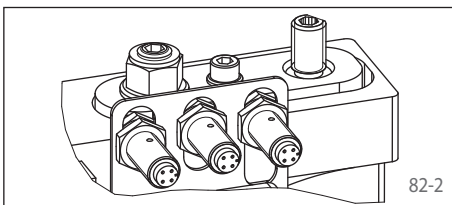
EV 038 EFM - 400 M - 25

Advantages

The brake caliper EV 038 EFM or EH 038 EFM is a very compact and high efficient disc brake with very low power consumption. Its floating bearing compensates small misalignments of the brake disc. The attached electronic reduces automatically the power consumption in closed position to 30 W.

Options

- Inductive proximity switch: "Brake released", "Brake closed"-status and/or "Friction block wear adjustment necessary"



82-2

Technical Data

Brake Calipers EV 038 EFM and EH 038 EFM with supply voltage 380/400/415 VAC	
Brake disc diameter	Braking torque
mm	Nm
430	3400
520	4250
630	5320
710	6090
800	6950
900	7910
Clamping force	24000 N
Clamping force or braking torque adjustable	70 - 100%
Power consumption in closed position	30 W (100% duty factor)
Fuse rating	16A, time-lag
Switching frequency	240/h permanent activations at 20° C ambient temperature
Switching time*	at least 10 seconds
Weight	50 kg

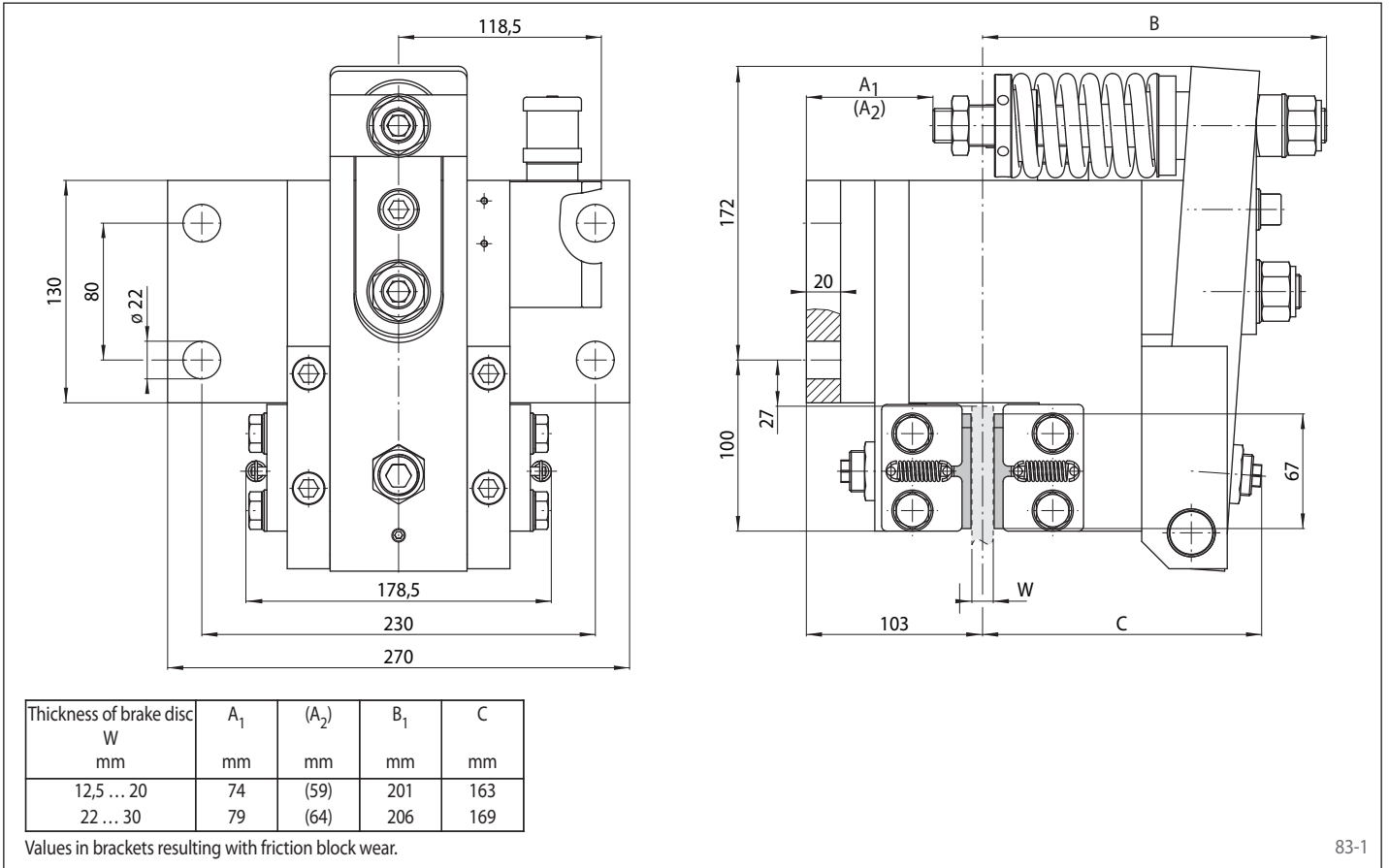
The braking torques shown in the table are based on a theoretical friction coefficient of 0,4.

* shorter switching time on request

Brake Calipers EV 038 EFM and EH 038 EFM

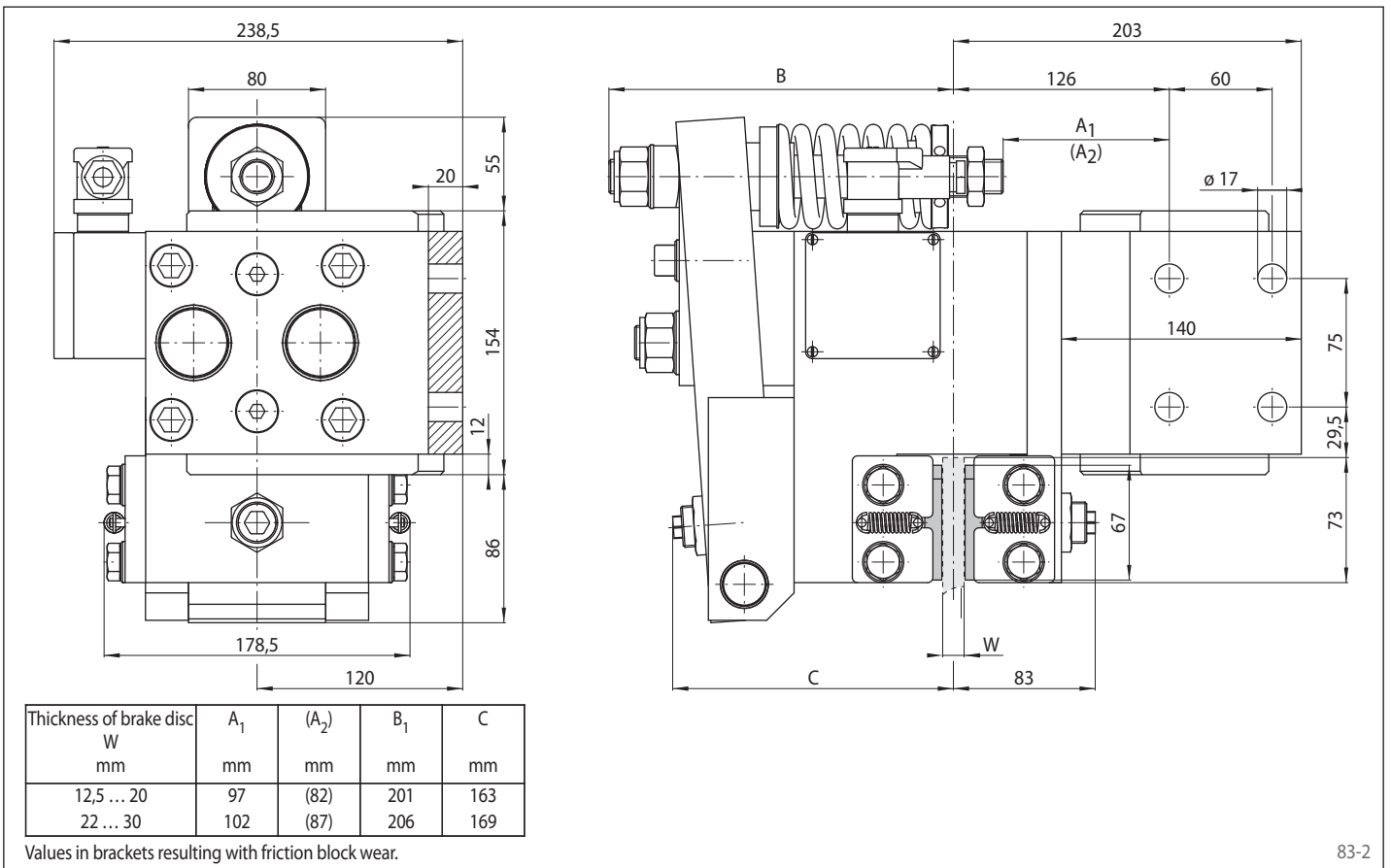
electromagnetically activated – spring released

Brake Caliper EV 038 EFM



83-1

Brake Caliper EH 038 EFM



83-2