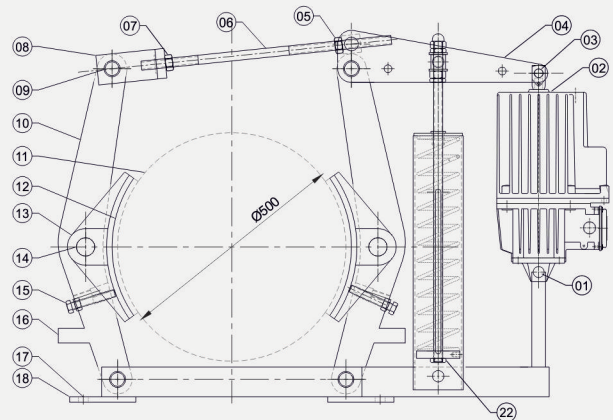
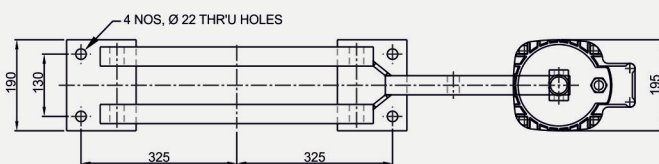
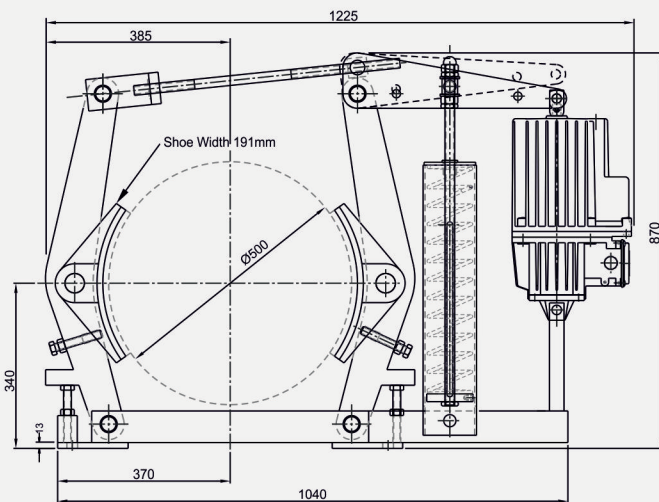
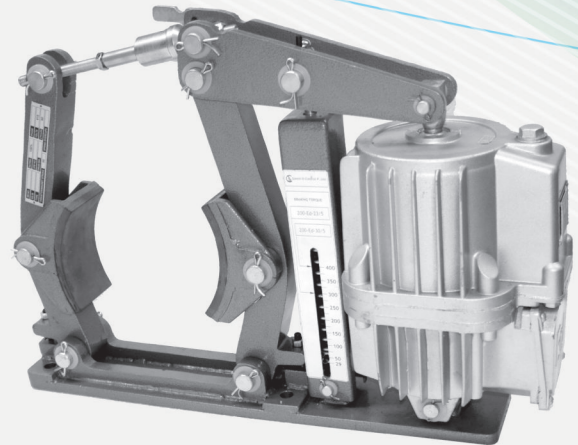


SMD 500-50

Features

- Robust and rugged design to withstand arduous environment in steel, Rolling Mills, Elevators, Lifts Cements and other heavy engineering plants.
- Excellent designs & good manufacturing process (GMP) ensure a reliable product.
- Consistent braking torque due to selected and tested brake lining material.
- The design ensures efficient distribution of forces.
- Sturdy components and Thruster ensure long, trouble free service and requires no major attention.
- Ease Of maintenance and replacement of brake shoe without dismantling the brake.
- Compact designs and elegant aesthetic looks.



1. Thruster assembly
2. Thruster Hinge Pin (lower)
3. Thruster Hinge pin (Brake lever)
4. Base Plate.
5. Foundation bolt holes
6. Side Arm
7. Side Arm stopper screw
8. Shoe adjusting screw
9. Shoe hinge pin
10. Brake shoe
11. Brake liner
12. Brake Drum (User's supply)
13. Tie-rod adjustment nut & lock-nut
14. Swivel Block
15. Tie rod or, connecting rod.
16. Swivel block for lever..
17. Tie-rod Hinge pin
18. Lever hinge pin
19. Lever
20. Brake Torque adjustment nuts
21. Compression Spring
22. Main Arm.

Brake Type	Item Code	Mbr Torque U = 0.4		Lifting force at +35°C U = 0.4		Stroke (Mm)	Power at + 35° (W)	Current at +35 CV. 415 Hz 50 (A)	Oil Capacity Liters (Ltrs.)	Max cycles per hour with ambient temperature of +50° C (n°)	Max ambient temperature for continuous operations (C°)	* Weight (Kg)
		Nm	Kgm	N	kg							
SMD-500-50	100200080001	1400	140	500	50	60	330	1.2	4.2	2000	50	130

*Without Thruster



Speed-O-Controls Pvt. Ltd.

H. O. Unit - I : C-15/16, Nand Jyot Industrial Estate,
Andheri-Kurla Road, Mumbai - 400072 ,
Tel : (022) 42469700-30, 28518512-3-4,
Fax : (022) 42469797/ 28518516,
E-mail : sales@socgroup.in

Unit - II: Plot No. 4912, G. I. D. C., Phase IV,
Vatva, Ahmedabad - 382445
Tel.: (079) 40083201/2/3/4,
Fax : (079) 25841056,
E-mail : sales.amd@socgroup.in

Visit us at :
www.speedocontrols.com
www.socremote.com