

Steel Mill Duty Limit Switch

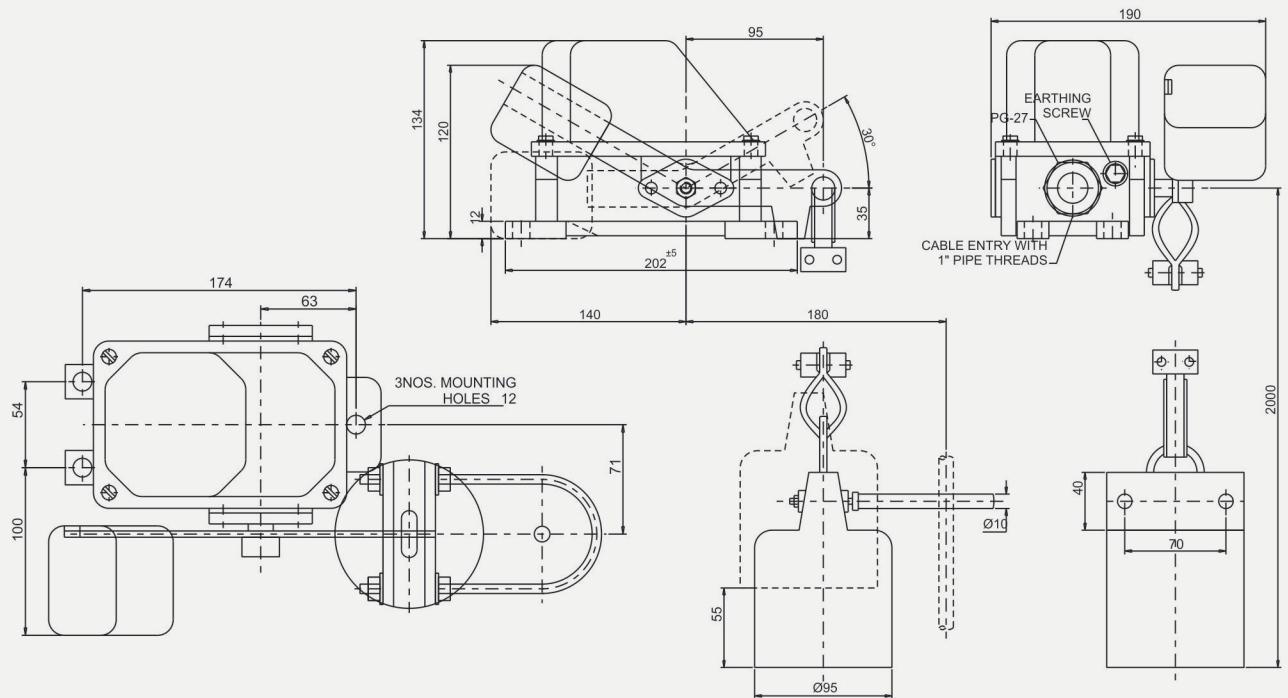
Introduction

Counter Weight Limit Switch operates the control change-over contacts of motor of any moving equipments when a cam moving with loads actuates the lever of Limit Switch. This turns the cam on a square shaft and operate the NO / NC change over contact elements.



Technical Data

Limit Switch	Steel Mill Duty
Type	Two Way / One Way
Body Material	AL Die Cast
Protection Degree	IP-55 (IS-13947 (Part - 1)
Operating Temperature	-25°C to 70°C Cast Aluminum Enclosing
Mounting Position	Horizontal Lever Upward and Downward
Cable Gland	PG - 27
Contacts	Double Brake, Silver Cadmium
Wire Connection	Screw Terminal Contact
Rated Voltage	Up To 500 VAC
Thermal Test Current	10 A
No. Of Contacts	2 NC (1 + INC NC)



Type	Number of work positions	Type of drive	Fixation(in the)	Maximum speed drive, m / min
UWLS/1SH/2	2	Weight with counter-weigh	Outermost positions	100



Speed-O-Controls Pvt. Ltd.

H. O. Unit - I : C-15/16, Nand Jyot Industrial Estate,
Andheri-Kurla Road, Mumbai - 400072 ,
Tel : (022) 42469700-30, 28518512-3-4,
Fax : (022) 42469797/ 28518516,
E-mail : sales@socgroup.in

Unit - II : Plot No. 4912, G. I. D. C., Phase IV,
Vatva, Ahmedabad - 382445
Tel.: (079) 40083201/2/3/4,
Fax : (079) 25841056,
E-mail : sales.amd@socgroup.in

Visit us at :
www.speedocontrols.com
www.socremote.com