

Master Controller

Sheet Steel Enclosure

Construction

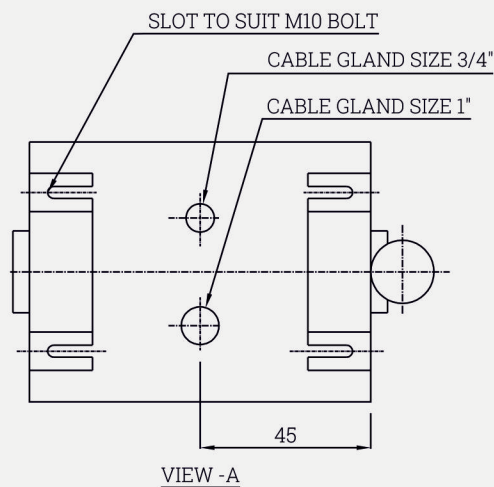
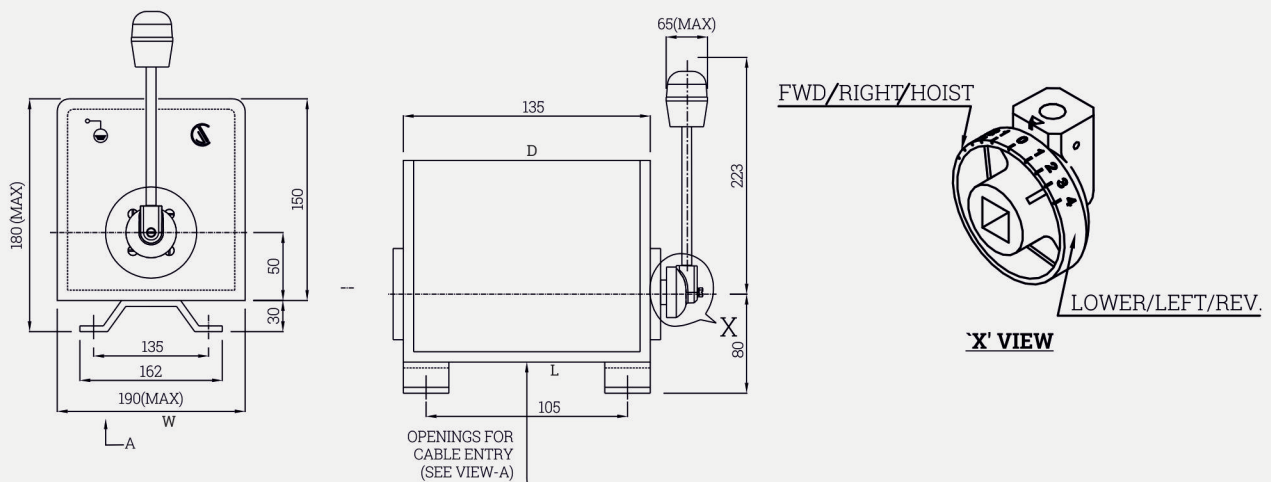
Master Controller is housed in an enclosed cover & provided with an easily removable cover with ample area for maintenance. The cam shaft is mounted on bearing bushes on walls of housing. The cams are made of delrin material & fixed on a square spindle switch moved by a handle. The cams are cut corresponding to the switching program.

Aluminum die cast Powder Coated suitable for Hoist-Grab, Mill Duty, E.O.T. Cranes & Rolling mill drives.



Technical Data

Master Controller	Standard
Enclosure	Sheet Metal
No. of Contacts	6 / 11 / 13
Rating of Contacts	10 Amps / 40 amps
No. of Steps	4 Or 5
Type of Enclosure	Ip-41



Size	L	D	W	No. of Cable Entries	
				3/4"	1"
1	135	105	190	1	1
2	195	165	190	2	2
3	245	215	190	2	2



Speed-O-Controls Pvt. Ltd.

H. O. Unit - I : C-15/16, Nand Jyot Industrial Estate,
Andheri-Kurla Road, Mumbai - 400072 ,
Tel : (022) 42469700-30, 28518512-3-4,
Fax : (022) 42469797/ 28518516,
E-mail : sales@socgroup.in

Unit - II: Plot No. 4912, G. I. D. C., Phase IV,
Vatva, Ahmedabad - 382445
Tel.: (079) 40083201/2/3/4,
Fax : (079) 25841056,
E-mail : sales.amd@socgroup.in

Visit us at :
www.speedocontrols.com
www.socremote.com