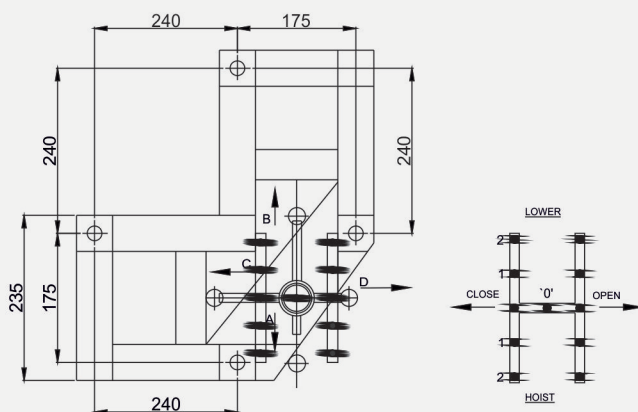
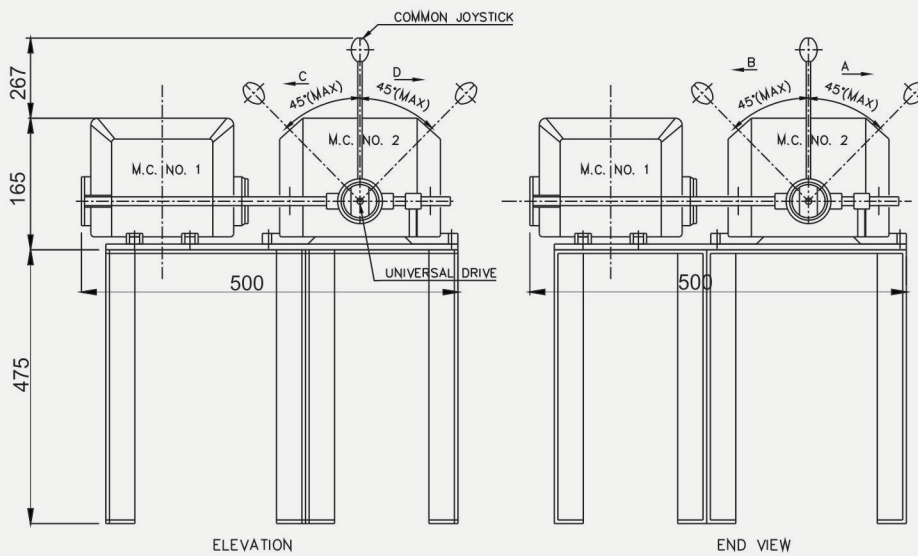
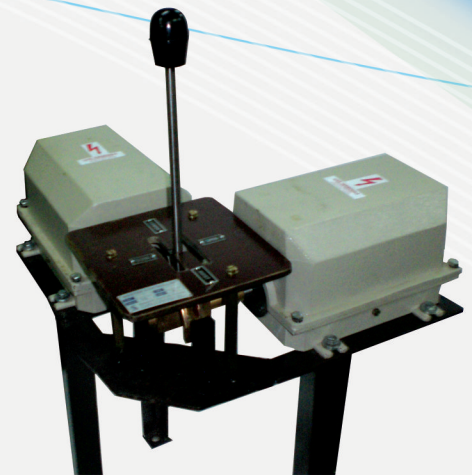


Master Controller

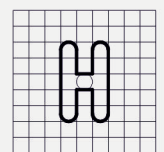
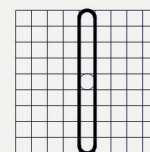
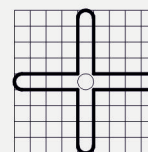
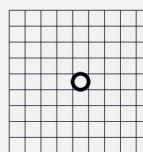
Introduction

Twin master controller with one universal handle allows a crane operator to control both bridge & trolley motions with one handle. Simultaneous operation of bridge & trolley motions provide for greater spotting accuracy and faster movement of loads. The handle of joystick can be moved into any quadrant and any position. Universal controllers are also used for hoist / grab motion.

Master controllers are coupled with universal joint for operation of controller individually / jointly to get the desired motion operation.



LEVER GATES



SINGLE
OPERATION
AT A TIME

SINGLE
MOTIONSE

FOR
HOIST / GRAB

Technical Data

Body Material	Al. Die Cast
Contact Material	Silver cadmium
Contacts	Single bracket
No. Of Contacts	16 per controller(max.)
Contact rating	10/40 amps.

Note :-

- 1) master controller no.1 operates in the direction - 'a' & 'b'
- 2) master controller no.2 operates in the direction - 'c' & 'd'
- 3) all angles are 40 x 40 x 5.
- 4) no. Of notches 4(max)
- 5) max. No. Of cams per controller-16.
- 6) no. Of cable entries a) dia. 20-2 nos. b) dia. 26-2 nos.zz



Speed-O-Controls Pvt. Ltd.

H. O. Unit - I : C-15/16, Nand Jyot Industrial Estate,
Andheri-Kurla Road, Mumbai - 400072 ,
Tel : (022) 42469700-30, 28518512-3-4,
Fax : (022) 42469797/ 28518516,
E-mail : sales@socgroup.in

Unit - II: Plot No. 4912, G. I. D. C., Phase IV,
Vatva, Ahmedabad - 382445
Tel.: (079) 40083201/2/3/4,
Fax : (079) 25841056,
E-mail : sales.amd@socgroup.in

Visit us at :
www.speedocontrols.com
www.socremote.com